

# Africa Safari Karatu

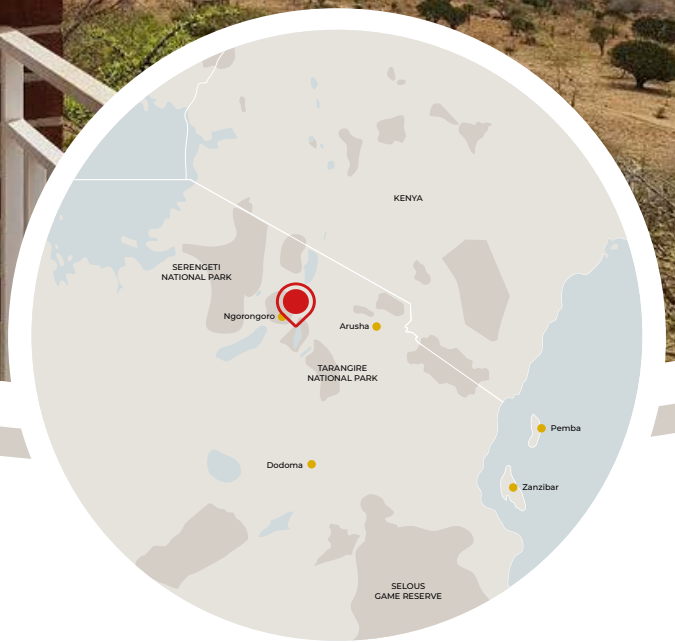
## Relaxing in African style

Africa Safari Karatu is a luxury safari lodge located on the edge of the Ngorongoro Conservation Area. The area became popular with early settlers and farmers because of its cool climate, green hills and beautiful views, with coffee being one of the most important crops. The rolling slopes of the extinct Ol Deani volcano are a striking feature of the landscape. The accommodation is located on top of a hill and offers a stunning view of the Northern Highlands, Lake Eyasi and its surroundings.

Due to the ideal location of Africa Safari Karatu, Lake Manyara National Park and the world-famous Ngorongoro Crater are easily accessible. Africa Safari Karatu has two types of Bungalow Rooms, the Safari Comfort Bungalows and Safari Luxury Bungalows, whereas the Safari Luxury Bungalow is 10 square metres bigger than the Safari Comfort Bungalow and has a comfortable sofa in the

seating area. Offering you all the luxury you wish for before or after your safari! All bungalows have their own balcony with a 180-degree view. The restaurant, bar and swimming pool will add to the feeling of being home away-from-home.

**The stunning views of the Northern Highlands and Lake Eyasi that Africa Safari Karatu offers, together with its ideal location which allows easy access to Lake Manyara National Park and the Ngorongoro Crater, makes this accommodation the perfect place to relax comfortably before or after your safari.**



Open all year round - 365 days - 24/7



AFRICA SAFARI  
**KARATU**  
Ngorongoro Highlands

[www.paradise-wilderness.com](http://www.paradise-wilderness.com)  
[info@paradise-wilderness.com](mailto:info@paradise-wilderness.com)

+255 789 467 746





### LOCATION

**Located on the top of a hill, offering a stunning 360 degree view of the Ngorongoro Highlands and Lake Eyasi.**

Africa Safari Karatu is located just outside of the Ngorongoro Conservation Area, easily accessible from and to Lake Manyara National Park and the Ngorongoro Crater.

GPS: 3°23'10.9"S 35°37'04.1"E-3.38630, 35.61780



### FACILITIES

**Everything you need (and more)**

- Reception area
- Bar and Restaurant
- Comfort Bungalows
- Luxury Bungalows
- Safari Tents
- Free WIFI in restaurant and bar
- Electricity on solar energy and generator
- Water heated by solar energy
- 24-7 security
- Safari jeep with pop-up roof for hire (no self-drive) on request
- Swimming Pool



### PARK INFORMATION

**What you should know**

Africa Safari Karatu is located in the Ngorongoro Highlands, just a few kilometres away from the spectacular Ngorongoro Crater and Lake Manyara.

For the Crater entry, NCAA fees need to be paid, for entry to Lake Manyara NP, TANAPA entry fees apply. Agents must submit these fees electronically online, while for private visitors, Africa Safari Karatu can assist.

	Number of rooms	Guests per room	Bedroom size (sqm)	Bathroom size (sqm)	Total room size (sqm)	King size bed	Sofa/single bed	Indoors seating area	Safe box	Pool towel	Bath tub	Air Conditioning/Heating unit	Mosquito net	Complimentary toiletries	Coffee/tea making facilities	Drinking water	Charging points (phone and camera)	Maximum guests in the room
Safari Comfort Bungalow	10	2+1	34	8	50	1	2	•	•	•			•	•	•	•	•	3
Safari Luxury Bungalow	14	2+1+1	42	10	60	1	2	•	•	•	•	•	•	•	•	•	•	4
Safari tent	5	1+1																2

2: Double bed 1: single bed



# WHY GO THERE?

- ✓ Breathtaking landscapes
- ✓ Close to the Ngorongoro Crater and Lake Manyara National Park
- ✓ Perfect stop-over between Arusha and Serengeti
- ✓ Good facilities
- ✓ Various day activities available
- ✓ Spectacular landscapes and scenery
- ✓ Build in 2023





## Safari Comfort Bungalow

Maximum occupancy  
**3 guests**



The Safari Comfort Bungalows have a characteristic look and raw charm due to the brick walls. The rooms are furnished with a double bed or two twin beds, with on request another single bed can be placed in the room. There is a seating area, a bathroom with a washbasin, shower and toilet. The Safari Comfort Bungalow is 50 square meters. Each room has its own private balcony of 10 square meters offering a 180-degree view with on the left side Lake Eyasi and on the right the Ngorongoro Highlands, and is nicely decorated with wooden furniture.

There are 10 units available.

- ✓ Double bed (180 x 200) or two single beds (90x200)
- ✓ Quality mattresses and bed linen
- ✓ Inside seating area
- ✓ Fully equipped bathroom
- ✓ Charging points for mobile phones and cameras
- ✓ Mosquito nets
- ✓ Balcony with seating area





# Safari Luxury Bungalow

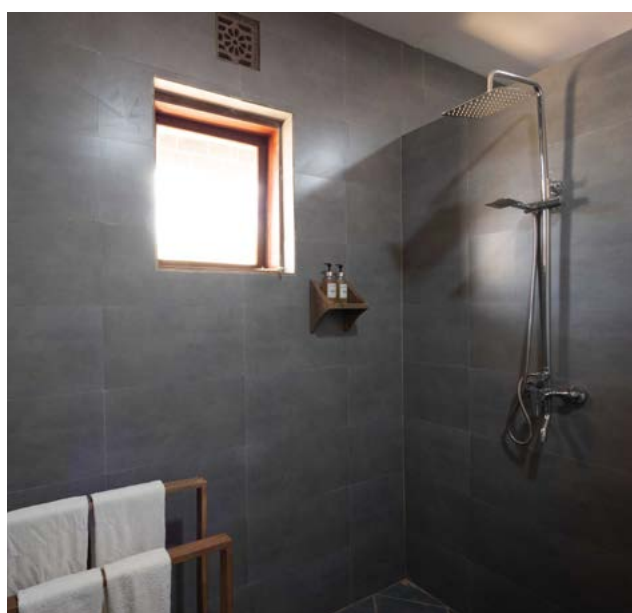
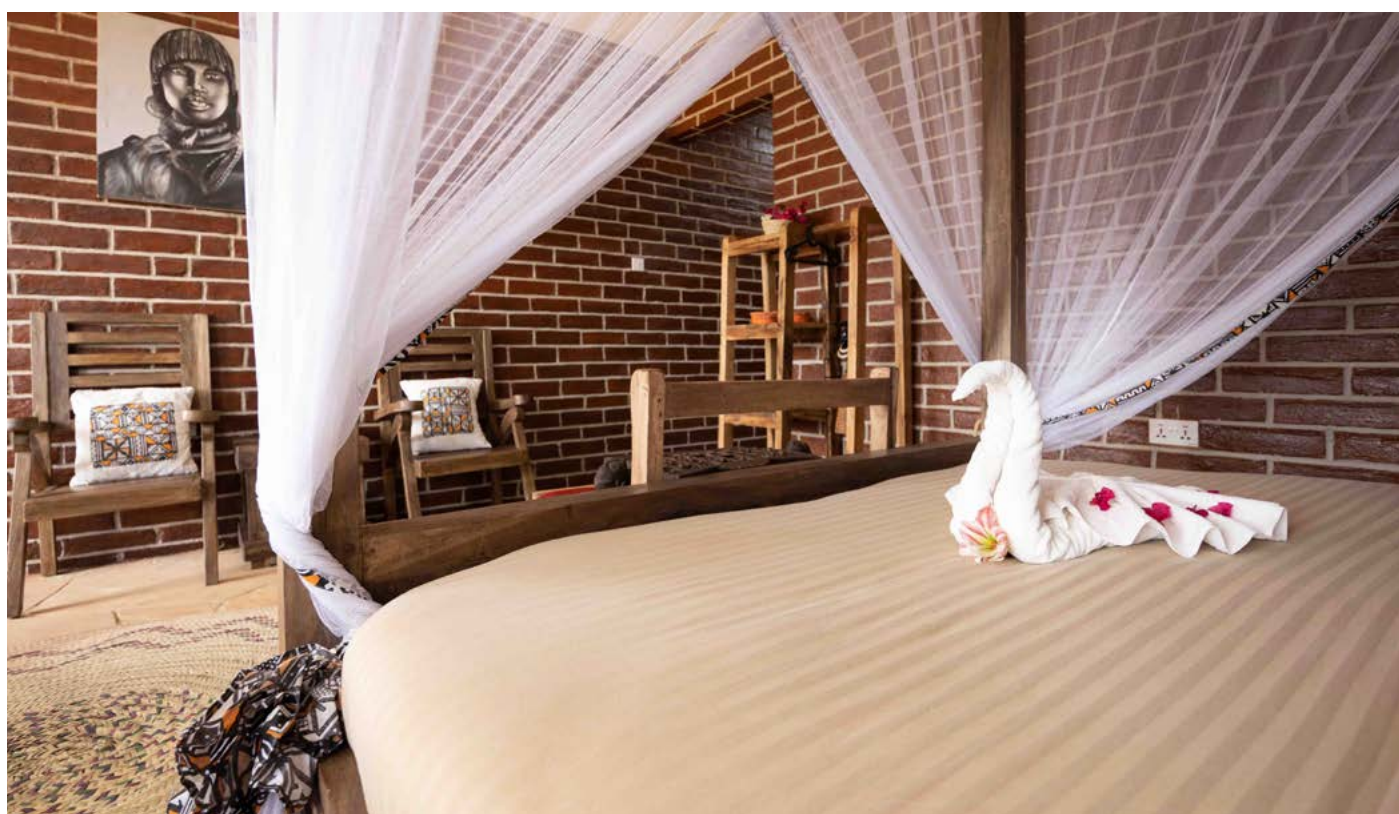
Maximum occupancy  
**4 guests**



Thanks to the brick walls, the Safari Luxury Bungalows have a characteristic look and raw charm. The rooms are furnished with a double bed and one single bed, with on request a maximum of one double bed and two single beds. There is a seating area with a Chesterfield sofa, a bathroom with a washbasin, bathtub, shower and toilet. The Safari Luxury Bungalow is 60 square meters. Each room has its own private balcony of 10 square meters, nicely decorated with wooden furniture and offering a 180-degree view with on the left side Lake Eyasi and on the right the Ngorongoro Highlands.

- ✓ Double bed (180 x 200) and/or two single beds (90x200)
- ✓ Quality mattresses and bed linen
- ✓ Inside seating area with a comfortable sofa
- ✓ Fully equipped bathroom with bathtub and shower
- ✓ Air Conditioning/ Heating Unit
- ✓ Charging points for mobile phones and cameras
- ✓ Mosquito nets
- ✓ Balcony with seating area

There are 14 units available.





## Safari Tent

Maximum occupancy  
**2 guests**



Small but cosy, basic but effective, perfect and at low cost. The Safari Tents are situated on the campsite close to the view with an amazing view of the Ngorongoro Highlands and Lake Eyasi. With 2 single beds inside and a small seating area outside, it's the perfect accommodation for those who want to go back to basics

There are 5 tents available

- ✓ Shared toilet and (hot water) shower facilities
- ✓ Close to the pool, restaurant and bar
- ✓ Private location
- ✓ Very suitable for overland trucks, budget groups and backpackers



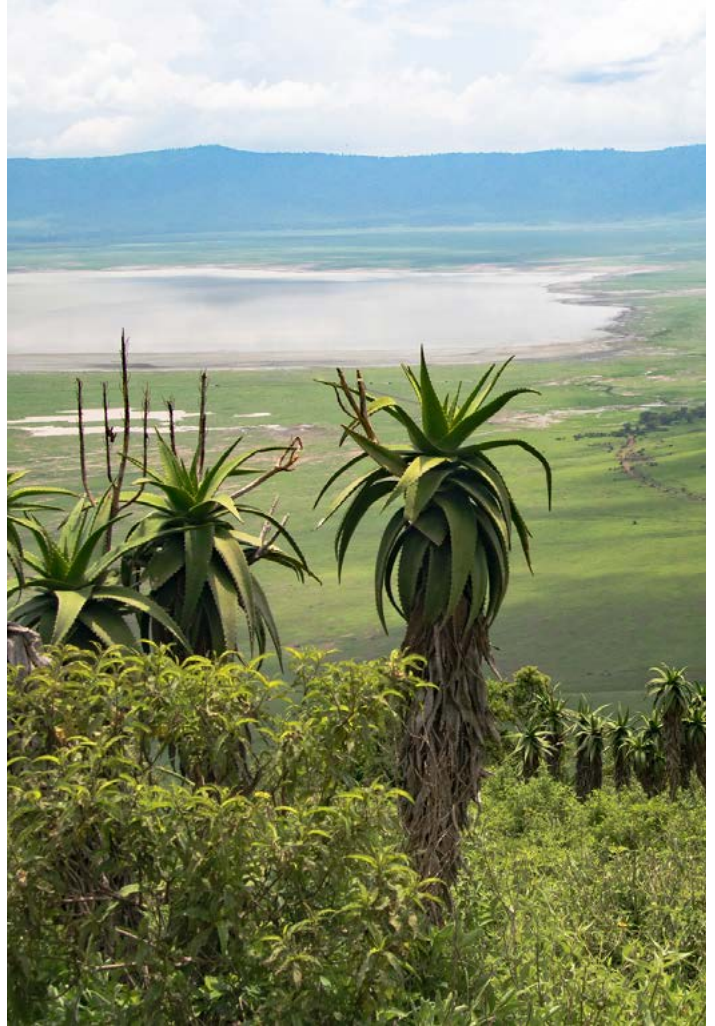


## Ngorongoro Crater

Nothing can prepare you for the breathtaking beauty of Ngorongoro Crater. Standing on the viewpoint and beholding the crater, the clouds floating around the crater rim with a cool, mountainous breeze in the air, there is no mistaking the divinity of Mother Nature.

Ngorongoro Crater is a world heritage site, the world's largest intact volcanic caldera and is widely referred to as the 8th Wonder of the World. Due to its natural boundaries, there is an abundance of wildlife in the protected area which is home to the Big Five including the African black rhino, but you will also find hyenas, zebras and elephants to name but a few.

The Ngorongoro Crater is an absolute must on any northern tour.



## Lake Manyara National Park

Lake Manyara National Park, an underrated gem among safari parks, offers great ecological diversity in a small area. The alkaline soda of the lake attracts impressive numbers of birds that thrive on the water. More than 400 species have been identified and one of the highlights is the thousands of flamingos.

From the park's main entrance, the road winds through an area of groundwater forests. On the grassy banks of the lake, wildebeest, giraffe, zebra and the great buffalo can be seen grazing throughout the day. The park also offers excellent opportunities for hippo watching.

The mahogany and acacia trees are inhabited by the famous tree-climbing lions; with a bit of luck, you may see them lazing on tree branches.

## Highlights



Views of the Northern Highlands



Perfect overnight between Lake Manyara and the Ngorongoro Crater



WiFi by satellite



Swimming pool



Unique location and affordable



Only 10km from the Ngorongoro Gate



Located in the centre of the Northern Safari Circuit



Nicely decorated bungalows with brick wall design



Restaurant with a great view



Variety of activities

## Activities

### COFFEE FARM VISIT

Visit one of the many Coffee Farms during your stay, and learn everything you need to know about the coffee production. Karatu's weather conditions and fertile ground make it a perfect place for coffee crops. You will learn how the coffee trees are planted, coffee berries are harvested and fermented and how the beans are dried and sorted. Explore the great history and culture the coffee plantations have, with coffee being one of the biggest export products of Tanzania.



### HADZABE

Lake Eyasi is home to East Africa's last true hunter-gatherers; the Hadzabe. They hunt animals like antelope, gazelles, birds and mongooses with bow and arrow, and collect fruit, roots and honey from the baobab trees. They own no possessions other than what they need to survive, such as bow and arrows and a few pots for cooking. The arrows are made by another tribe in this area; the Datoga. These herders are skilled blacksmiths. They collect scrap metal, which they skillfully process into bracelets, arrowheads and knives, and trade these tools for food collected by the Hadzabe. Both tribes are hospitable and will welcome you warmly.

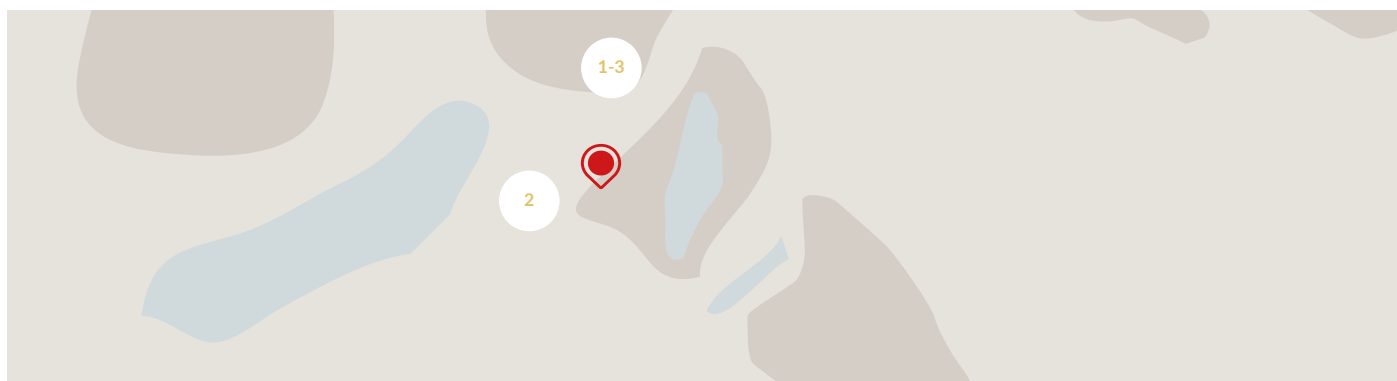


### KARATU TOWN TOUR

Discover the town of Karatu, a colourful town and the gateway to the Ngorongoro Highlands. During this Town Tour you will visit the marketplace, which is a great place to look for souvenirs to take back home while mingling with the locals. Explore the rainbow coloured stalls and small shops, where you can find almost everything you wish for. Spices, vegetables, carved wooden ornaments and a lot of delicious local snacks such as fried cassava and bananas or chapati.







## Safari Jeep

A safari jeep with pop-up roof for hire on request, including driver and fuel. Your driver guide is very knowledgeable and will make sure to give you as much time as you need to ask questions, take pictures and enjoy the incredible landscape.



Distance in km.	Africa Safari Arusha	Africa Safari Lake Natron	Africa Safari Maasai Boma, via Lake Natron	Africa Safari Maasai Boma, via Serengeti	Africa Safari Serengeti Ikoma	Africa Safari South Serengeti	Africa Safari Lake Manyara	Africa Safari Rift Valley, via the 150 corners road	Africa Safari Rift Valley, via Lake Manyara NP	Africa Safari Selous
Africa Safari Karatu	142	143	273	266	206	125	33	100	85	933
Reachable without overnight stop	YES	YES	NOT ADVISABLE. Overnight in Africa Safari Lake Natron	NOT ADVISABLE. Overnight in Africa Safari South Serengeti	YES	YES	YES	YES	YES	NO. Overnight in Africa Safari Arusha, Dar Es Salaam

### DEVELOPMENT:

In the coming years the Karatu District Council is working on sustainably developing cultural tourism in the district. This will be done by positioning Lake Eyasi as a leading destination for cultural tourism experiences, while enhancing the conservation of natural and cultural heritage, protecting the wellbeing of the local community and attracting visitors with shared values. It is believed that in the long run, Karatu will be the second largest tourist town after Arusha city on the Northern circuit.



# Most common wildlife in the area (Ngorongoro and Lake Manyara)

Lodoare Gate, Ngorongoro, B144



Black rhino  
Elephant  
Buffalo  
Wildebeest  
Lion  
Leopard (\*)  
Cheetah



Hyena  
Impala  
Giraffe  
Zebra  
Hippo  
Lesser Flamingo  
Glossy Ibis



Hartebeest  
Eland  
Martial eagle  
Black heron  
Silvery-cheeked  
Hornbill  
Kori Bustard

*A massive variety  
of birds and birds  
of prey  
(\*) Nocturnal*

MONTHS	Jan	Feb	Mar	Apr	May	Jun	Jul	Aug	Sep	Oct	Nov	Dec
Game drives	●	●	●	●	●	●	●	●	●	●	●	●
Activities	•	•	•	•	•	•	•	•	•	•	•	•
Great migration Ngorongoro Conservation Area	•	•	•								•	•
Migratory birds	•	•	•	•						•	•	•
Dry season						•	•	•	•	•		
Green season			•	•	•					○	○	

● Best Game Drives ○ Half month conditions



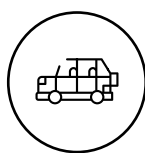
## Airstrip / Airport

Nearest airstrip - Lake Manyara  
Airstrip - 22 km / 30 minutes by vehicle

Alternative airstrip - Lake Ndutu  
airstrip - 122 km / 3 driving hrs by vehicle

Domestic airport - Arusha  
Airport - 135 km / 2.5 driving hrs by vehicle

International airport - Kilimanjaro  
International Airport (JRO) - 200 km / 3.5 driving hrs by vehicle



## From Africa Safari Karatu to...

Ngorongoro Lodoare  
entrance gate - 10 km

Naabi Hill Serengeti  
entrance gate - 116 km

Lake Manyara  
entrance gate - 32 km

Lake Eyasi - 50 km

Arusha - 140 km



## Good to know

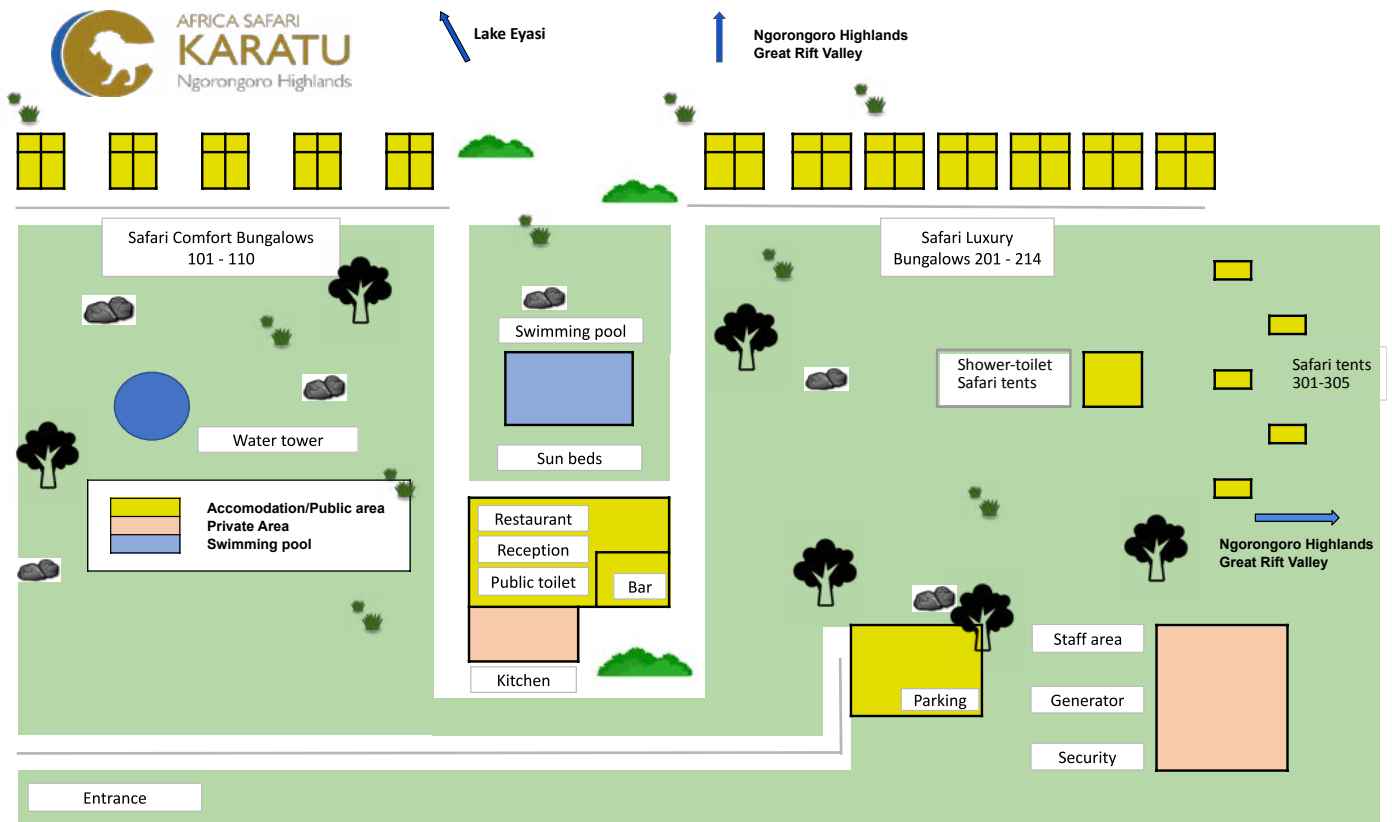
Altitude: 1480 mtr  
Day time temp: +/- 30°C  
Night time temp: +/- 15°C  
Green season: short Nov-Dec + long Mar-Apr-May

ACCOMMODATION  
Safari Comfort Bungalow (10)  
Safari Luxury Bungalow (14)  
Safari Tent (5)

MEALPLAN  
Bed and breakfast  
Half board  
Full board

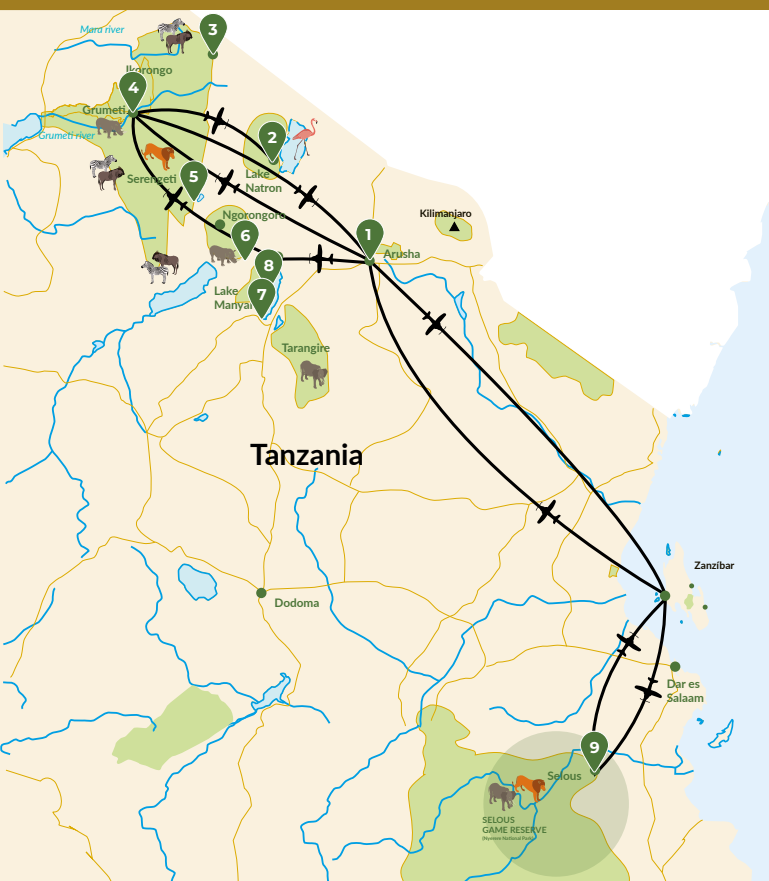
CREDIT CARD - CURRENCY  
Master card / Visa card  
TZS, USD and Euro







## Other accommodations in the Paradise & Wilderness group



1. Africa Safari Arusha
2. Africa Safari Lake Natron
3. Africa Safari Maasai Boma (Klein's Gate)
4. Africa Safari Serengeti Ikoma
5. Africa Safari South Serengeti (Ndutu)
6. Africa Safari Karatu
7. Africa Safari Rift Valley (Tarangire/Lake Manyara)
8. Africa Safari Lake Manyara
9. Africa Safari Selous



1. Reef & Beach Resort \*\*\*\*
2. Paradise Beach Resort \*\*\*\*
3. Zanzibar Bay Resort \*\*\*\*
4. Dream of Zanzibar \*\*\*\*\*
5. Shaba Boutique Hotel \*\*\*\*
6. Paradise Island Zanzibar \*\*\*\*\*  
*Opening 2025*
7. Corals of Zanzibar Apartment Resort \*\*\*\*



AFRICA SAFARI  
**KARATU**  
Ngorongoro Highlands



**GAME CONTROLLED  
WILDLIFE SAFARI  
AREA**  
TAWA area game  
drive-, conservation  
and bed night fees  
apply here. Request  
us to arrange this  
for you.



Errors in and changes to the contents as well as accommodation- and activities modifications reserved.

[www.paradise-wilderness.com](http://www.paradise-wilderness.com)  
[info@paradise-wilderness.com](mailto:info@paradise-wilderness.com)

+255 789 467 746

More  
contact  
details



Website  
Karatu



Photo  
Gallery



Price  
List

Ed. 15/03/2023